



**SEAMAN
REALTY
AND
MANAGEMENT
COMPANY**

SINCE 1993

- 3,200 SF Condo
- Built 1924
- 4 Bedrooms
- 3 Bathrooms
- Full Kitchen
- Living Room
- Dining Room
- Fireplace
- Wood Floors
- 1 Parking Space in front of unit w/ 2 rear covered parking spaces
- Private patio and garden
- Fully renovated and appointed

FOR SALE > CONDO UNIT

3,200 SF

Klutho Condo In Napier Building, Riverside

1534 Riverside Ave, Jacksonville, FL 32204

\$ 569,000

Located in historic Riverside, within the Henry John Klutho designed Napier Apartments is this charming and fully renovated 3,200 SF condo. This beautifully inviting 1924 home includes 4 spacious bedrooms, 3 bathrooms an updated kitchen, hardwood floors, a fireplace, a private patio and garden. A gated entry is being constructed for a private garage with 2 covered parking spaces available per condo unit and access to storage unit, rear pool and gardens. It has all the modern updates and conveniences making this a unique and comfortable living space.



Historic Condo built 1924



**CONTACT
US**

SEAMAN REALTY & MANAGEMENT COMPANY
2532 Park St. Jacksonville, FL 32204 | 904-201-3313
www.seamanrealty.com

**AGENT:
MARGIE SEAMAN**
904-201-3313
margie@seamanrealty.com





**SEAMAN
REALTY
AND
MANAGEMENT
COMPANY**

SINCE 1993

FOR SALE > CONDO UNIT

3,200 SF

Interior Pictures

Klutho Condo in Napier Building

1534 Riverside Ave, Jacksonville, FL 32204

\$ 569,000

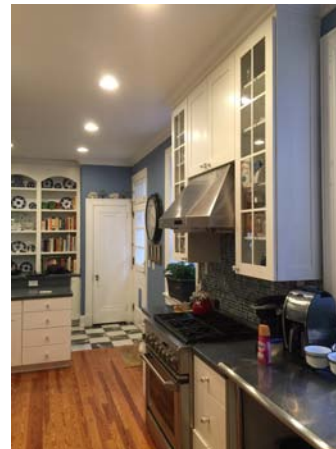
- 3,200 SF Condo
- Built 1924
- 4 Bedrooms
- 3 Bathrooms
- Full Kitchen
- Living Room
- Dining Room
- Fireplace
- Wood Floors
- 1 Parking Space in front of unit w/ 2 rear covered parking spaces
- Private patio and garden
- Fully renovated and appointed



Spacious Living Room with Fireplace



Renovated Kitchen with Stainless Steel Appliances



CONTACT
US

SEAMAN REALTY & MANAGEMENT COMPANY
2532 Park St. Jacksonville, FL 32204 | 904-201-3313
www.seamanrealty.com

AGENT:
MARGIE SEAMAN
904-201-3313
margie@seamanrealty.com





**SEAMAN
REALTY
AND
MANAGEMENT
COMPANY**

SINCE 1993

FOR SALE > CONDO UNIT

3,200 SF

Interior Pictures

Klutho Condo in Napier Building

1534 Riverside Ave, Jacksonville, FL 32204

\$ 569,000

- 3,200 SF Condo
- Built 1924
- 4 Bedrooms
- 3 Bathrooms
- Full Kitchen
- Living Room
- Dining Room
- Fireplace
- Wood Floors
- 1 Parking Space in front of unit w/ 2 rear covered parking spaces
- Private patio and garden
- Fully renovated and appointed

Family Room/TV Room



Large Dining Room



Hallway to Bedrooms



CONTACT
US

SEAMAN REALTY & MANAGEMENT COMPANY
2532 Park St. Jacksonville, FL 32204 | 904-201-3313
www.seamanrealty.com

AGENT:
MARGIE SEAMAN
904-201-3313
margie@seamanrealty.com





**SEAMAN
REALTY
AND
MANAGEMENT
COMPANY**

SINCE 1993

FOR SALE > CONDO UNIT

3,200 SF

Interior Pictures

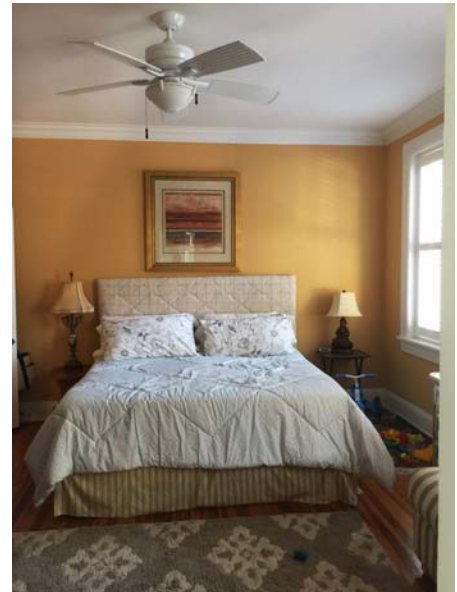
Klutho Condo in Napier Building

1534 Riverside Ave, Jacksonville, FL 32204

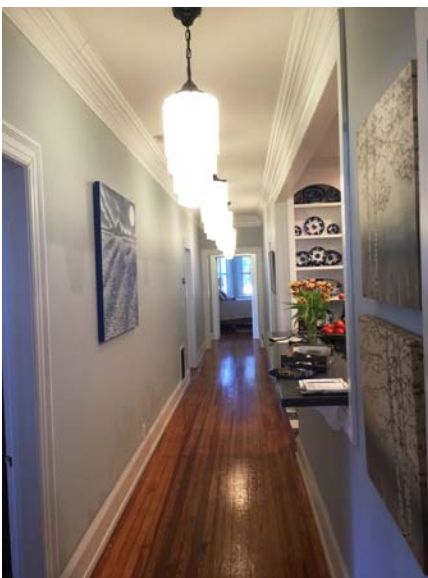
\$ 569,000

- 3,200 SF Condo
- Built 1924
- 4 Bedrooms
- 3 Bathrooms
- Full Kitchen
- Living Room
- Dining Room
- Fireplace
- Wood Floors
- 1 Parking Space w/option to rent additional parking spaces monthly
- Private patio and garden
- Fully renovated and appointed

Bedroom #1



Bathroom #1



CONTACT
US

SEAMAN REALTY & MANAGEMENT COMPANY
2532 Park St. Jacksonville, FL 32204 | 904-201-3313
www.seamanrealty.com

AGENT:
MARGIE SEAMAN
904-201-3313
margie@seamanrealty.com





**SEAMAN
REALTY
AND
MANAGEMENT
COMPANY**
SINCE 1993

FOR SALE > CONDO UNIT

3,200 SF

Interior Pictures

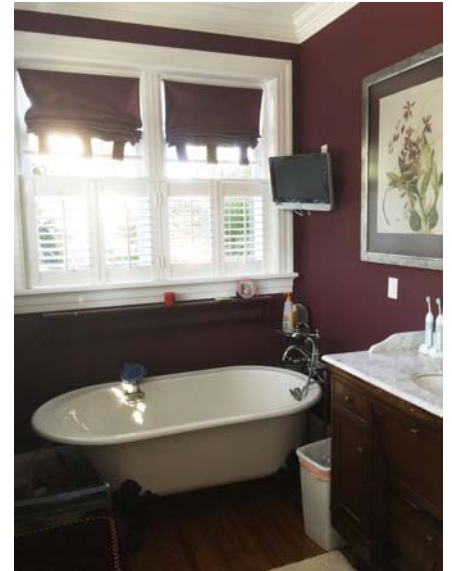
Klutho Condo in Napier Building

1534 Riverside Ave, Jacksonville, FL 32204

\$ 569,000

Bathroom #2 with shower and claw-foot tub

- 3,200 SF Condo
- Built 1924
- 4 Bedrooms
- 3 Bathrooms
- Full Kitchen
- Living Room
- Dining Room
- Fireplace
- Wood Floors
- 1 Parking Space in front of unit w/ 2 rear covered parking spaces
- Private patio and garden
- Fully renovated and appointed



Bedroom #2 with lots of natural light



CONTACT
US

SEAMAN REALTY & MANAGEMENT COMPANY
2532 Park St. Jacksonville, FL 32204 | 904-201-3313
www.seamanrealty.com

AGENT:
MARGIE SEAMAN
904-201-3313
margie@seamanrealty.com





**SEAMAN
REALTY**
AND
**MANAGEMENT
COMPANY**
SINCE 1993

FOR SALE > CONDO UNIT

3,200 SF

Interior Pictures

Klutho Condo in Napier Building

1534 Riverside Ave, Jacksonville, FL 32204

\$ 569,000

Bathroom #3

- 3,200 SF Condo
- Built 1924
- 4 Bedrooms
- 3 Bathrooms
- Full Kitchen
- Living Room
- Dining Room
- Fireplace
- Wood Floors
- 1 Parking Space
w/option to rent
additional parking
spaces monthly
- Private patio
and garden
- Fully renovated
and appointed



Hallway



Stacked washer dryer



CONTACT
US

SEAMAN REALTY & MANAGEMENT COMPANY
2532 Park St. Jacksonville, FL 32204 | 904-201-3313
www.seamanrealty.com

AGENT:
MARGIE SEAMAN
904-201-3313
margie@seamanrealty.com





**SEAMAN
REALTY
AND
MANAGEMENT
COMPANY**

SINCE 1993

FOR SALE > CONDO UNIT > SUMMARY

3,200 SF

Klutho Condo In Napier Building, Riverside

1534 Riverside Ave, Jacksonville, FL 32204

\$ 569,000

Located in the charming and historic Riverside area



Historic Condo fully renovated



CONDO SPACE

- 3,200 SF Condo
- Built 1924
- 4 Bedrooms
- 3 Bathrooms
- Full Kitchen
- Living Room
- Dining Room
- Fireplace
- Wood Floors
- 1 Parking Space in front of unit with 2 covered parking spaces in rear
- Private patio & garden
- Fully renovated & appointed

GENERAL INFORMATION

COUNTY:
DUVAL

MARKET:
JACKSONVILLE

PRICED AT:
\$569,000

YEAR BUILT:
1924

UTILITIES:
City, Water, Sewer

**CONTACT
US**

SEAMAN REALTY & MANAGEMENT COMPANY
2532 Park St. Jacksonville, FL 32204 | 904-201-3313
www.seamanrealty.com

AGENT:
MARGIE SEAMAN
904-201-3313
margie@seamanrealty.com

